

16-Ch Standalone DVR with DVD-RW



FEATURES

- DVR 16 Channels TRIPLEX 25 fps - 4CIF
- Built-in DVD-RW burner for backup
- H264 compression modes
- High Picture Quality: 4CIF(704x576)
- Control possible by mouse (USB) or keyboards (RS485)
- Remote monitoring and control through network (LAN)
- Various recording features (Normal, schedule, motion, alarm)
- USB2.0 Interface: USB Memory/ USB external HDD/ CD-RW, external DVD-RW backup
- Compatible to French law of september 2007 for quality in CCTV applications
- ESATA Output

16-Ch Standalone DVR with DVD-RW

SPECIFICATIONS

Operating System	Embedded OS
Basic Internal Storage	500 GB
Storage Max. Expansion	Internal (from 500 GB to 4 x 2TB), External (2 TB).
External Backup	USB HDD, USB Memory, DVD-ROM, Network
Internal Backup	Built in DVD-RW drive
Video Inputs	16 CH Composite, BNC
Video Outputs	2 CVBS (1 Main, 1 Spot), 1 VGA
Video Compression	H264
Display Speed	400 fps
Display Resolution	704x576
Recording Mode	Continuous, Event Alarm, Motion, Video Loss, Schedule
Recording Speed	400fps
Recording Resolution	QCIF(176x144), CIF(352x288), 2CIF(704x288), DCIF(528x384), 4CIF(704x576)
Search Mode	Date/Time, Event Alarm, Motion, Search Backup
Audio Inputs	16 CH BNC(2.0Vp-p, Ω)
Audio Outputs	1 CH, BNC, 600 Ohms
Alarm Inputs	16
Alarm Outputs	4
Motion Detection	On/Off/Area Setting
Network	Ethernet, 10/100 BaseT, ADSL Static IP, ADSL Dynamic IP(PPPoE), Cable Network (Dynamic IP)
Client software	Client Software (Windows 2000, XP, Vista), Web Viewer (Internet explorer)
Control	1 port RS485 and Mouse (USB)
Time Setting	Setting by Software local or internet
Serial Interface(s)	RS-232, RS-485 (PTZ Device control), System Keyboard, USB mouse
Multiplex Function	Triplex
Auto Switching	Camera switcher with manual, alarm and sequence control
Supply Voltage	220 ~ 240 VAC/50Hz
Power Consumption	max. 42 W
Weight	9 kg
Dimensions w*h*d	450 x 95 x 450 mm

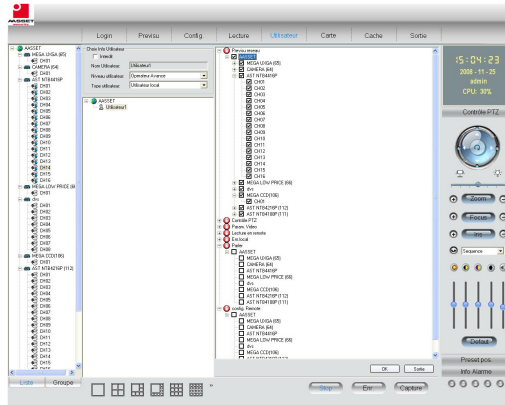


Design and specifications are subject to change without notice

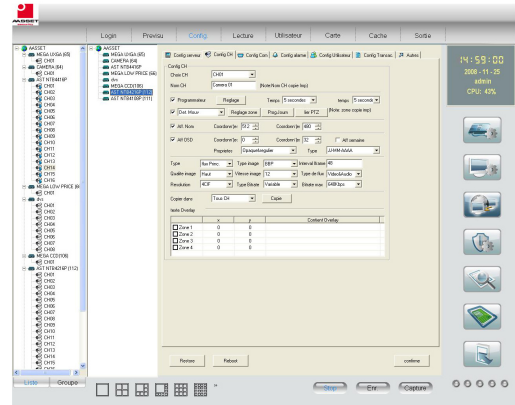
Status 02/2009

16-Ch Standalone DVR with DVD-RW

Configuration



1

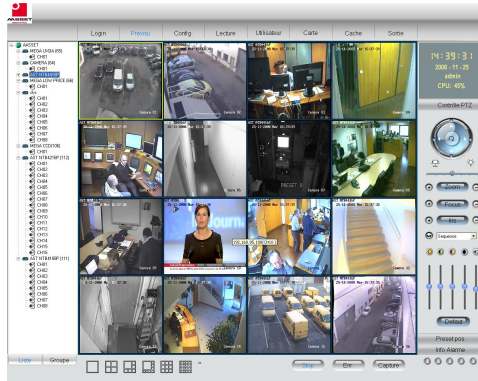


2

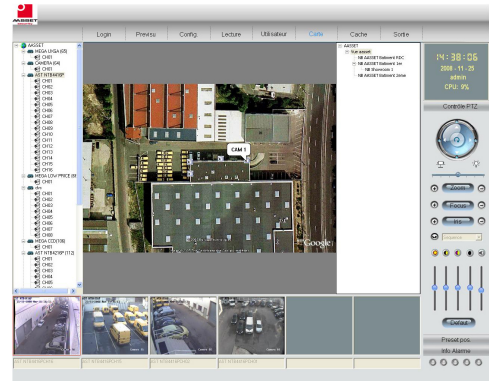
1: USER CONFIGURATION
2: PRODUCTS CONFIGURATION



Supervision



1



2

Live View and Plan with the award of cameras (fixed or PTZ)



Design and specifications are subject to change without notice

Status 02/2009

AASSET SECURITY SA

153, rue Michel Carré
F-95100 Argenteuil

Tel: +33(0)1 30 76 30 30
Fax: +33(0)1 30 76 25 74

info@aasset-security.com
www.aasset-security.com